

ChTZ – Chelyabinsk Tractor Plant

Sotsgorod

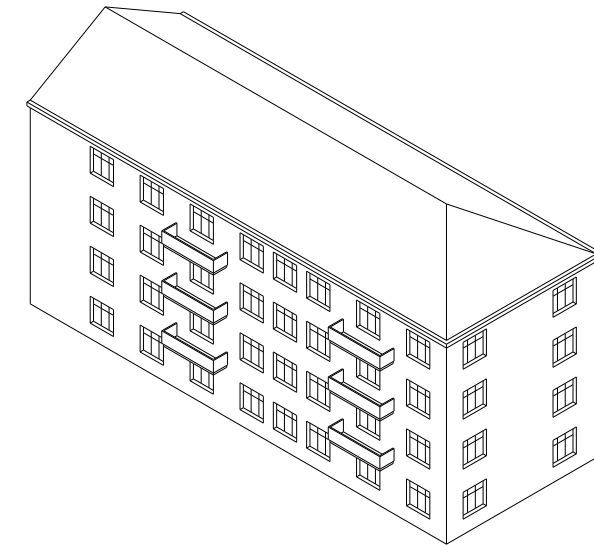
The Socialist City (Sotsgorod)
Soviet Period

Planned: 1929–1933
Realized: 1931–1950
Design Institute “Lengiprogor”
Architects: A. Burov

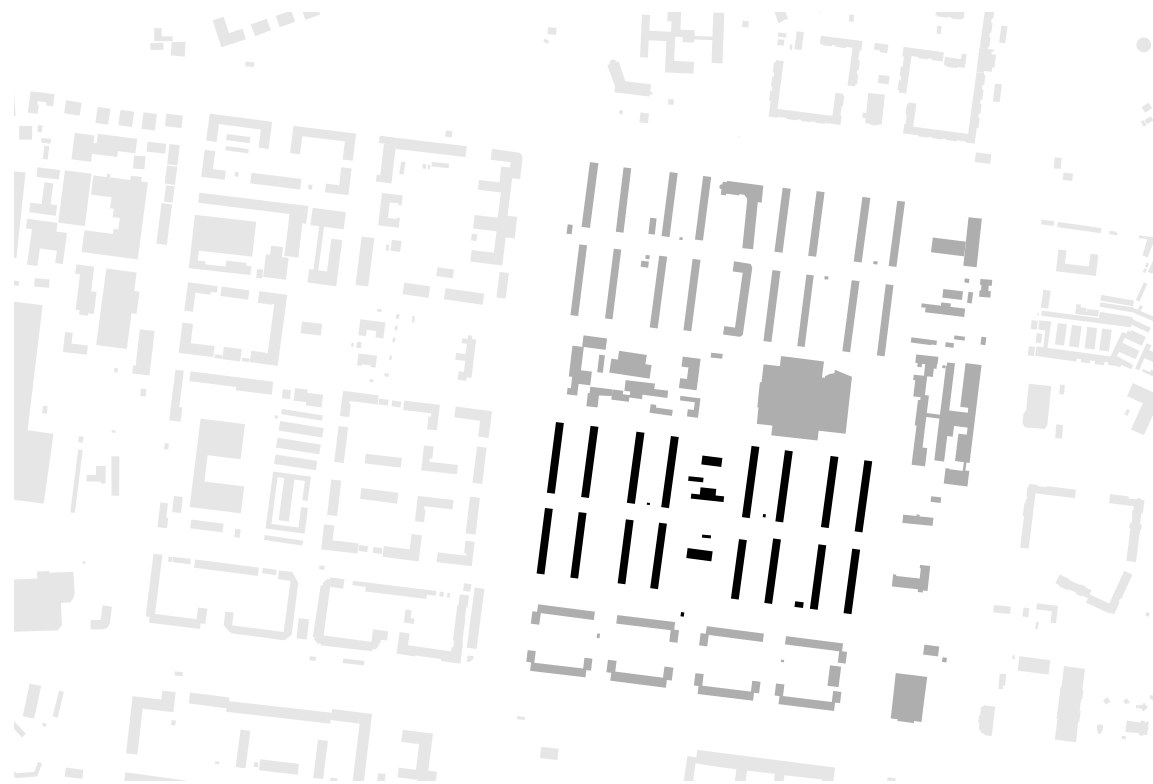
Project area: 45 ha
Average block area: 11 ha
Average BCR: 17 %
Average FAR: 0,53

Located in the city’s eastern part, the tractor plant and the residential part were conceived and constructed as part of the same megaproject. Following the General Plan, ChTZ, with 273 hectares for 50,000 inhabitants, was developed in 1930. In 1935, only about 40% of the plant’s employees lived in permanent housing.

Most objects were built from 1930 to 1933; the rest was completed in the late 1930s–1940s. The idea of a settlement commune remained unrealized. The embodied social city combined housing for family living and a developed socialized sector.



Residential building on 10 Savina st., by P. Staab, 2022



Block of Sotsgorod ChTZ, by L. Klein, 2022



Residential building on 18 Lenina st., by E. Konyshева, 1986



Fragment of residential development on Savina st., by E. Konyshева, 2010



Sotsgorod ChTZ, Funds of the ChTZ Museum, 1930s



Residential building on Belostotskogo st., by E. Konyshева, 2010